

Android internal service

Some signal-connecting library using VSS standard

Stefan Wysocki

Senior Software Engineer
Tieto
stefan.wysocki@tieto.com

The Tieto logo is displayed in white lowercase letters on a dark blue background. The letters are bold and sans-serif, with a distinctive shape for the 't' and 'o'.

VSS to standard Vehicle HAL

tieto

Translation from VSS to VHAL properties

- Flat the VSS hierarchy
- Map some of the „fields” to the one supported by hidl
- Loose „branch” type for grouping the properties
- Translation module for properties that are defined differently by both standards (translation of units or datatypes)

```

#
# Tire
#
- Tire:
  type: branch
  description: Tire signals for wheel

- Tire.Pressure:
  datatype: uint8
  type: sensor
  unit: kpa
  description: Tire pressure in kilo-Pascal

```

```

/**
 * Tire pressure
 *
 * min/max value indicates tire pressure sensor range. Each tire will have a separate min/max
 * value denoted by its areaConfig.areaId.
 *
 * @change_mode VehiclePropertyChangeMode:CONTINUOUS
 * @access VehiclePropertyAccess:READ
 * @unit VehicleUnit:KILOPASCAL
 */
TIRE_PRESSURE = (
  0x0309
  | VehiclePropertyGroup:SYSTEM
  | VehiclePropertyType:FLOAT
  | VehicleArea:WHEEL),

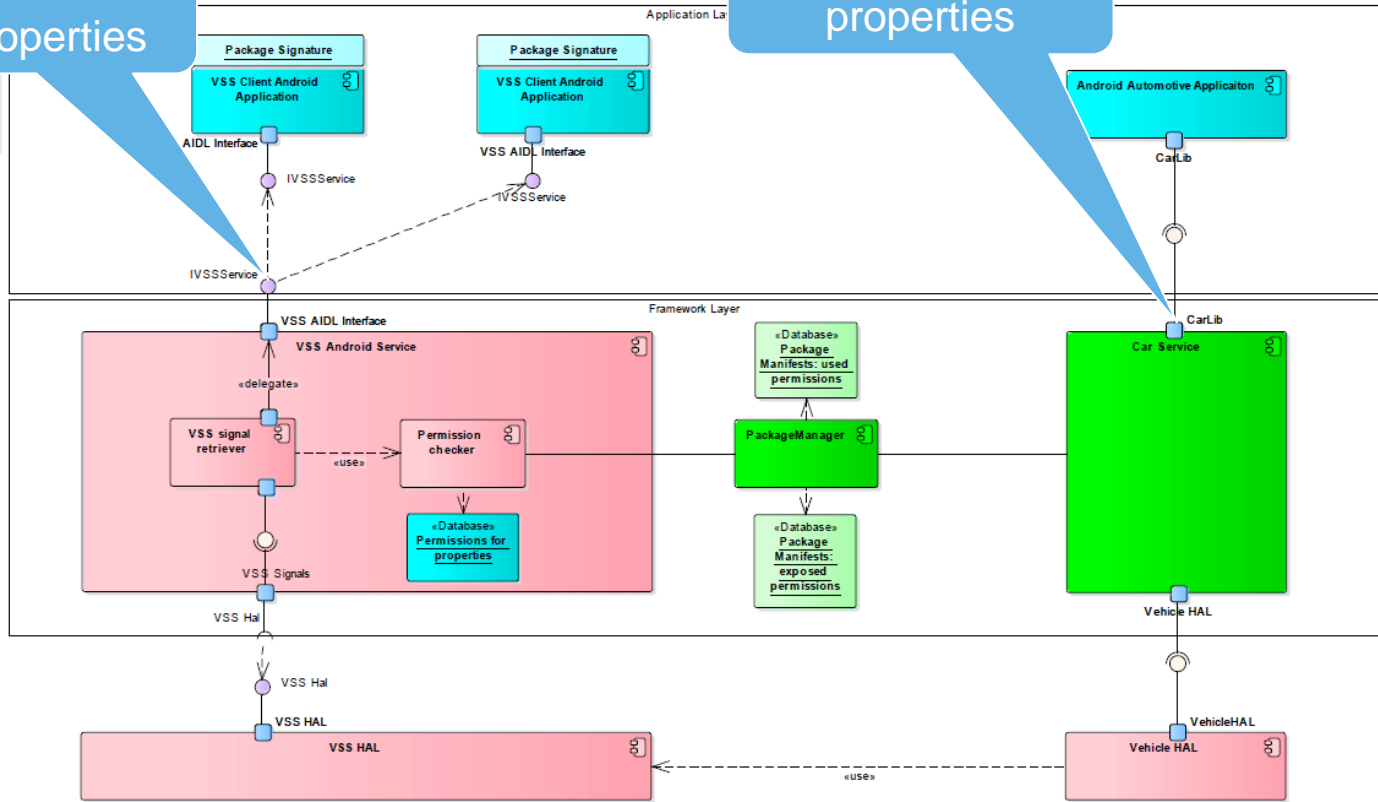
```

Variant I

Other defined VSS properties

Android defined properties

- Google
- OEM
- GENIVI

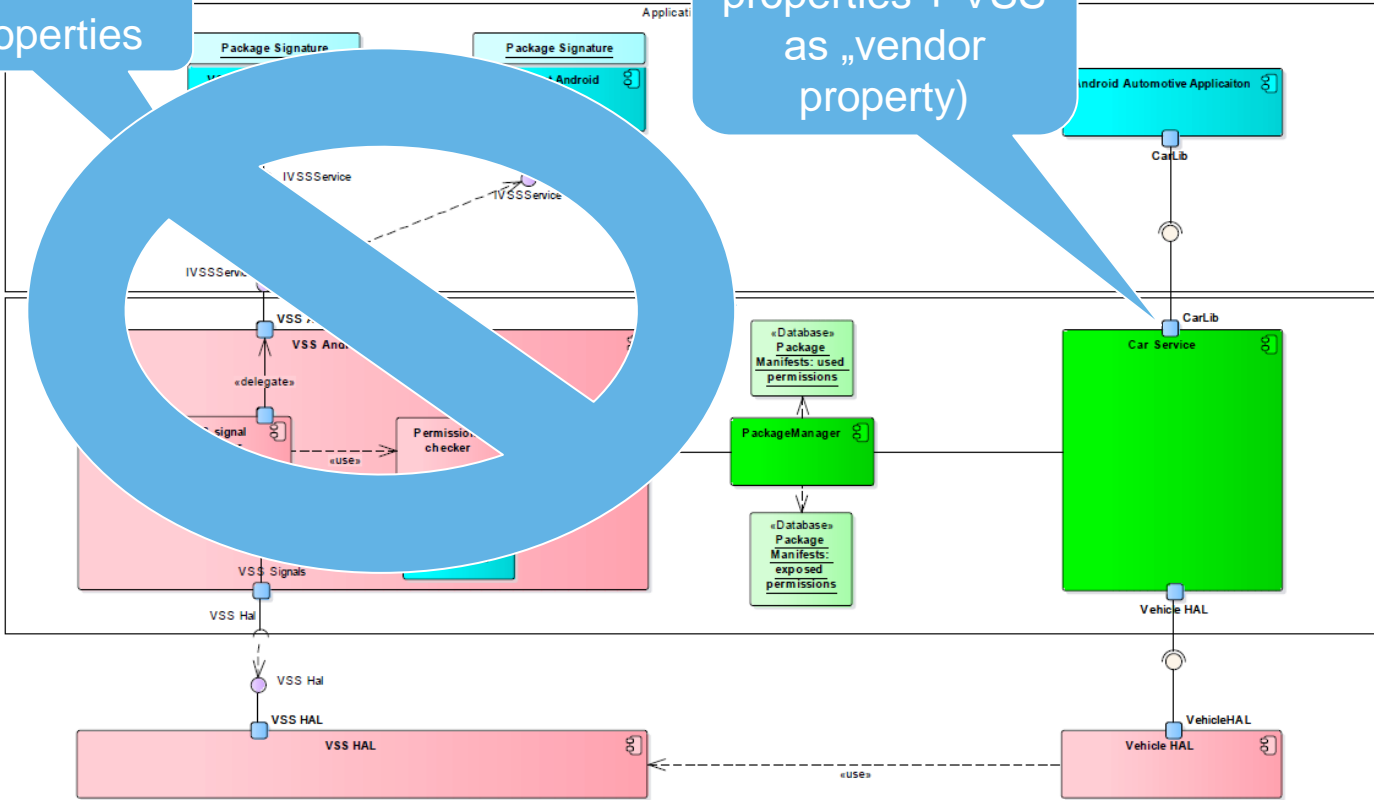


Variant II

Other defined VSS properties

Android defined properties + VSS as „vendor property)

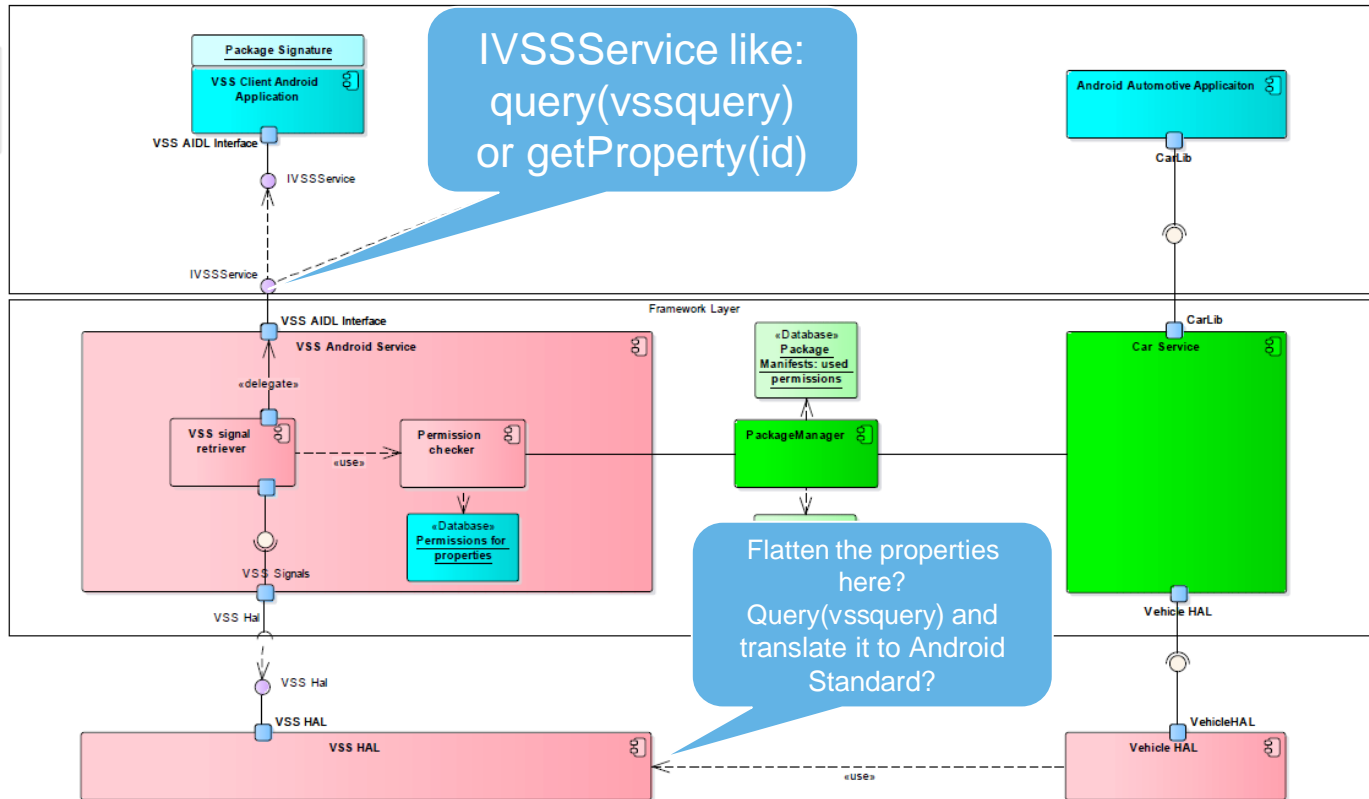
- Google
- OEM
- GENIVI

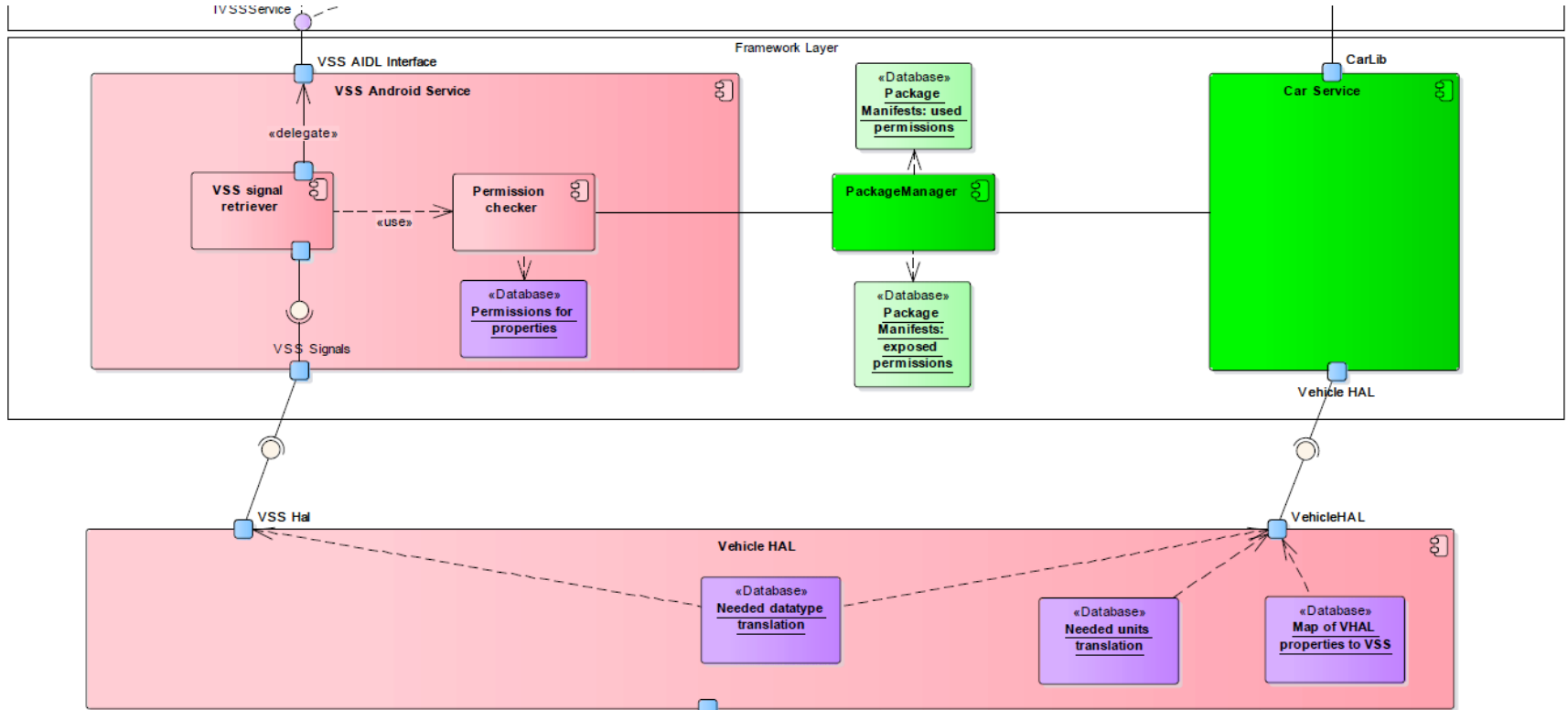


Variant III

Defined by

- Google
- OEM
- GENIVI





tieto

Stefan Wysocki

Senior Software Engineer
Tieto
stefan.wysocki@tieto.com